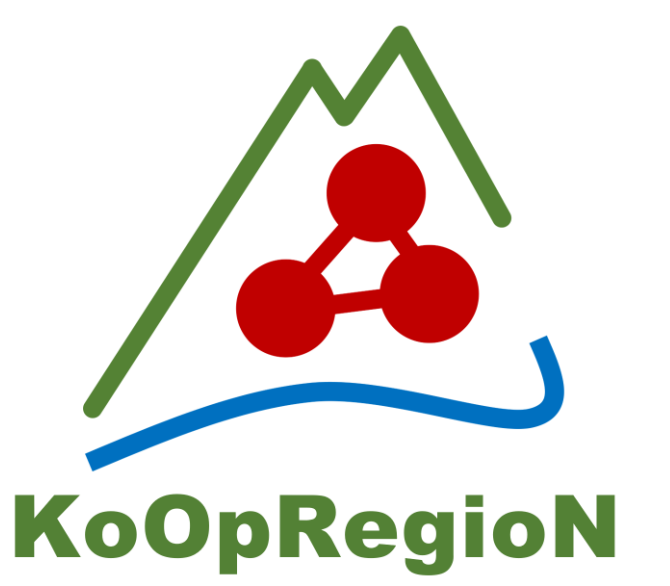


KoOpRegionN - Sustainable commercial areas management in the Northern Black Forest region



INTRODUCTION

The project KoOpRegionN aims to promote cooperation of urban and peri-urban communities towards more sustainable land use of commercial areas. Target region of the inter- and transdisciplinary research project is the central area of the city of Pforzheim with 20 surrounding communities. The project aims to combine three levels of action:

- Regional and communal land management
- Sustainability
- Governance (in particular inter-municipal cooperation)

OBJECTIVES

- **Analyze** common and innovative **practices of (urban and peri-urban) commercial areas management** (actors involved, project phases, possible conflicts, governance approaches as well as mid- and long-term effects).
- **Propose** a suitable **multi-level governance framework** to support the sustainability impact of inter-communal cooperation
- **Setting up** a **“community of practice”** to elaborate and show effects and benefits of innovative options of inter-municipal cooperation and a comprehensive sustainability perspective for a future commercial area development.
- **Co-design** a **regionally embedded inter-municipal strategy** for an integrated sustainable commercial areas development and test the identified options, as a basis for **conceptualizing a pilot project**.

METHODS

- **Actor identification and mapping;** conflict analysis through interviews and cognitive-affective mapping (CAM)
- **Analysis of actors’ perception** and evaluation concerning inter-municipal cooperation and sustainable design and use of commercial areas (by guided interviews and focus groups)
- **Policies classification** according to their relevance and selected criteria: field of action, actors, type of instrument, approved vs. innovative, jurisdiction, etc.

Structure of the policies overview for an integrated sustainable commercial areas management (ISCAM)

3 Thematic Domains: Inter-Municipal Cooperation, Land (use) management, Sustainability

Goal: "ISCAM"

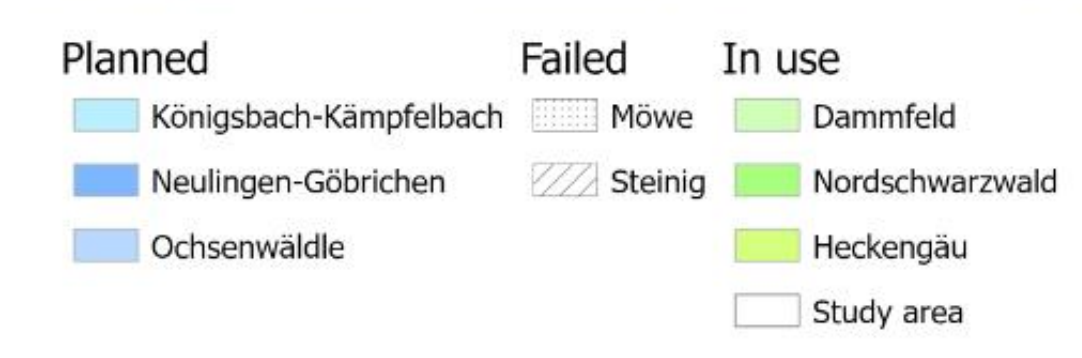
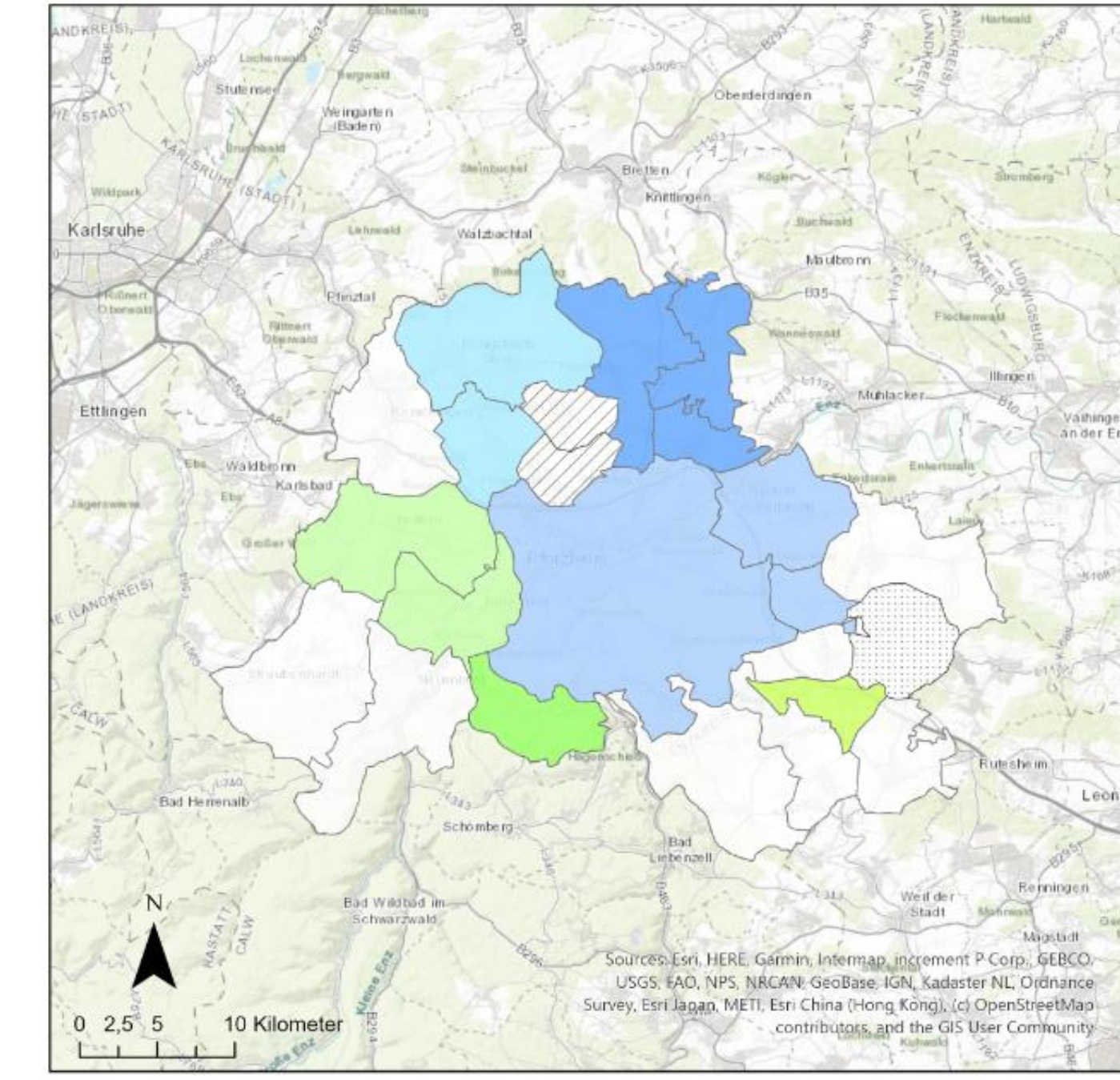
Q1: Inter-municipal and regional cooperation

A: Reduce Land use, B: Optimize Land use, C: Optimize Land use choices

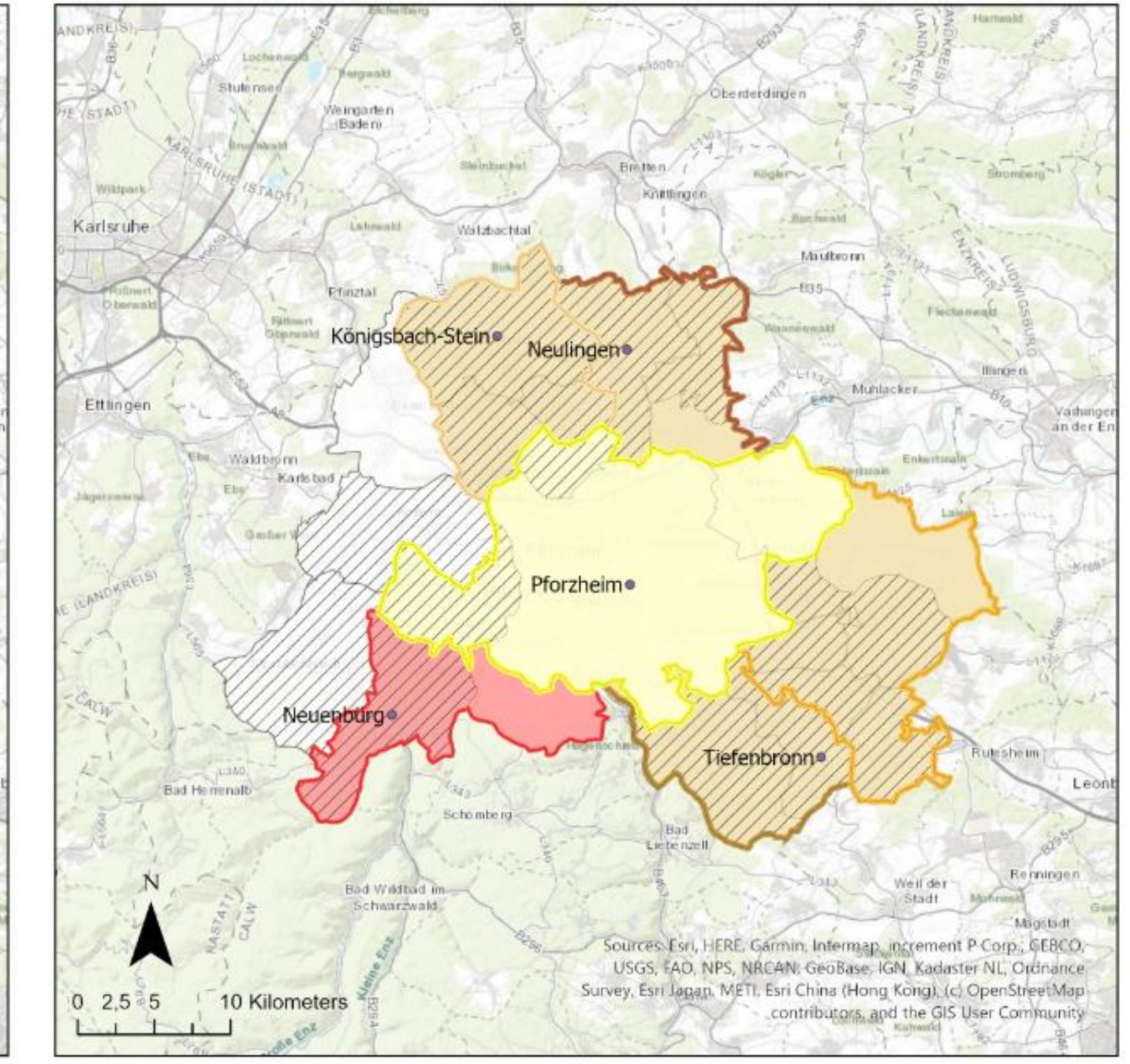
Q2: Local and regional sustainability approaches

Source: EIFER 2020
- **Development of a topic-adapted, integrative definition of sustainability** of commercial land use and according management and a corresponding system of criteria and indicators, based, amongst others, on the Integrative Sustainability Concept of the Helmholtz Association, in close cooperation with relevant actors
- **Analysis and design of policy mixes, scenario development**
- **Participatory modules**, e.g. participatory modelling, participatory public GIS and workshops to feed the co-design process.

Inter-municipal commercial areas in the greater Pforzheim area



Inter-municipal cooperation in the greater Pforzheim area



Source: ZIRIUS, Regionalverband NSW 2020 / GIS maps by EIFER

FIRST RESULTS

Identification of:

- **The most important obstacles** that have so far hindered inter-municipal commercial area projects in the greater Pforzheim area:
 - Improvable relationship between center city and the surrounding municipalities
 - Specificity of the eligible areas: particularly ecologically valuable, mainly forest stands
- **Actors** that could and should be involved in subsequent project activities
- **Selected instruments and measures** (policies) and their (multi-criteria) categorization
- **Key elements of a working definition** of sustainability in commercial land use and management, such as the integration of a life cycle approach in the analyses (including phases of planning, development, use, subsequent use), considerations of economic / efficient use of land, energy and non-energy resources as well as social / economic quality of life, the continuous participation of actors, etc.

Anticipated actor constellation in sustainable inter-municipal planning of commercial areas

